

Clash Detection Survey

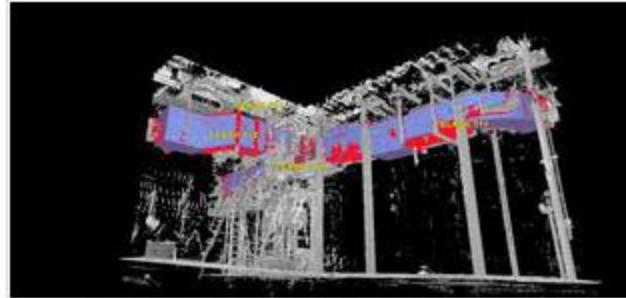
9/1/2012

0 Comments

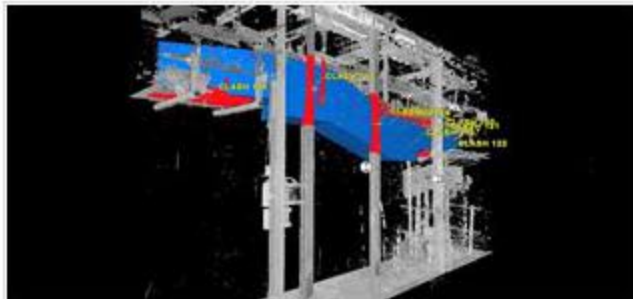
Following the successful laser scan of a large distribution centre using a Leica 7000 laser scanner we have now carried out the clash detection exercise. 3D models of proposed conveyors were created using the clients original 2D design drawings. These models were then imported into Leica's Cyclone software. Clash detections were performed on the 3D model against the point cloud data collected on site. Coordinates and images of individual clashes were exported and a report created. This will be used by our client to remove existing steels, hangers etc. prior to the installation of new conveyors.



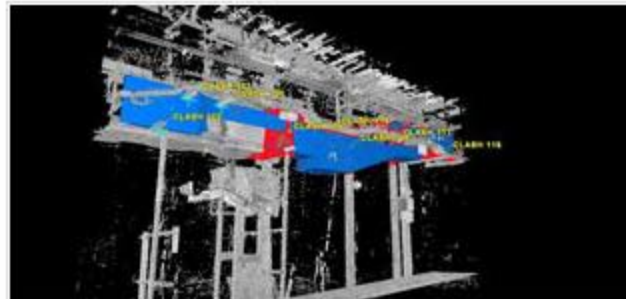
Plan view of 3d conveyor model showing clashes



3d model imported into point cloud, showing clashes



Laser scan showing clashes in red



Laser scan of conveyor, with 3d model and detected clashes

0 Comments

Grantham Coates Surveys

Land - Engineering - Measured Building Surveyors



Archives

- March 2016
- November 2015
- October 2015
- April 2015
- March 2015
- January 2015
- September 2014
- August 2014
- June 2014
- March 2014
- December 2013
- October 2013
- August 2013
- May 2013
- March 2013
- February 2013
- December 2012
- November 2012
- October 2012
- September 2012
- July 2012
- June 2012
- May 2012
- April 2012
- March 2012
- February 2012
- January 2012
- December 2011
- November 2011
- October 2011
- September 2011
- August 2011

Categories

- All
- Building Surveys
- Laser Scanning
- Measured Building Surveys
- News
- Topographic Survey
- Topographic Surveys

[View my profile on LinkedIn](#)

[RSS Feed](#)