

River, Rail and Laser Scanning!

29/11/2011

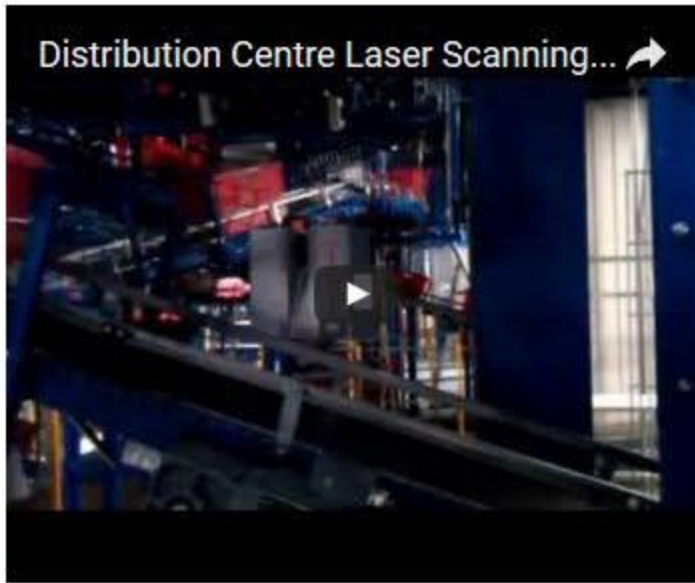
0 Comments

Last week saw us carry out surveys at both ends of the spectrum. Firstly a topographic survey of both river and railway environments in the North of England at the front end of the week. The survey is to aid the design of protection to the embankment from scouring out by the river.



River and railway surveying

Secondly, we spent three days with a Leica 7000 laser scanner scanning a very tight and complex area of conveyors in a distribution centre. The purpose of this survey is to carry out a clash detection exercise on proposed designs against existing site conditions.



0 Comments

London Laser Scan and Distribution Centre As-built

20/11/2011

0 Comments

The end of another busy week! The early part saw us completing the work up of a laser scan into 2d drawings for a new timber framed extension to an existing property. Primarily to detail newly completed foundations as well as verticality checks on the existing structure. Also the completion of a simple topo for the design of a swimming pool.

Mid week we were carrying out a days laser scan in central London to enable massing and more detailed 3d models to be created. We utilised a Leica 6200 laser scanner alongside Leica 1202 total station for control.

On Thursday a site meeting at a major food distribution centre set us up for 3 days laser scanning next week. The purpose is to produce full 3d point cloud as-built data to aid design works for new equipment to be installed.

0 Comments

Topos and laser scans

7/11/2011

0 Comments

This week sees us carrying out a couple of topographic surveys, both are for new developments. The first being a small business park and the second to help facilitate highway design for a large housing development.

Also planned for this week is a building survey laser scan of a detached dwelling to enable accurate plans, sections and elevations for the design of a new timber framed extension. Images to follow in the coming weeks.

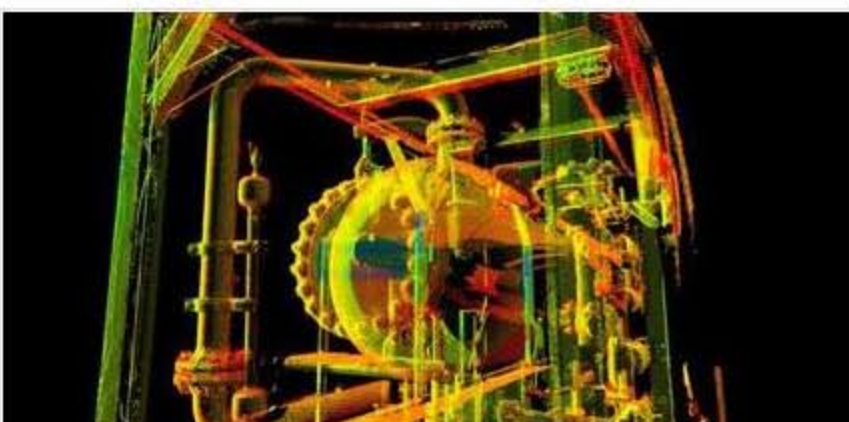
0 Comments

Boiler room and plant modelled in Cyclone from Leica 6100 data

1/11/2011

0 Comments

Last week saw us complete two separate laser scanning modelling projects. One being a fully modelled boiler room and the other a utilities plant survey. Due to client confidentiality we are unable to post images, however please see our Laser Scanning pages for example of modelled plant.



Example of plant environment scanned using Leica scanner

0 Comments

Grantham Coates Surveys

Land - Engineering - Measured Building Surveyors



Archives

March 2016
November 2015
October 2015
April 2015
March 2015
January 2015
September 2014
August 2014
June 2014
March 2014
December 2013
October 2013
August 2013
May 2013
March 2013
February 2013
December 2012
November 2012
October 2012
September 2012
July 2012
June 2012
May 2012
April 2012
March 2012
February 2012
January 2012
December 2011
November 2011
October 2011
September 2011
August 2011

Categories

All
Building Surveys
Laser Scanning
Measured Building Surveys
News
Topographic Survey
Topographic Surveys

[View my profile on LinkedIn](#)

 [RSS Feed](#)