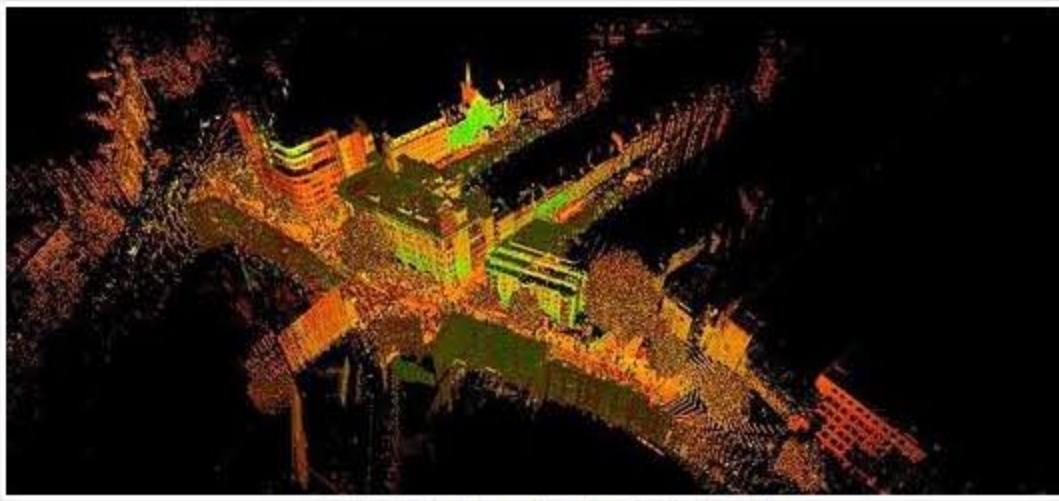


London Laser Scan Images

20/6/2012

0 Comments



Point cloud data captured using Leica C10

Our recent laser scanning project in London is now complete. As previously discussed we have provided 2d elevations for Rights of Light purposes, in addition we supplied scalable orthographic tiff images of street elevations as well as plan views. These will be used to help

build up a 3d model within Archicad. Archicad does not currently support point cloud data in its native form, however fully scalable high resolution images of the point cloud can be imported and used within Archicad. The images shown have been reduced in size for the web, if you would like to see some full resolution images please contact us.



Fully scalable orthographic image. Once the point cloud data has been captured and registered, images like this can be quickly exported. Can this replace your standard 2d line work elevation drawing?



Another orthographic street elevation, this time with true RGB colours captured with the C10's onboard camera.

0 Comments

Henley-on-Thames Laser scanning survey

12/6/2012

0 Comments



Laser scanning a Henley-on-Thames Pavilion.

Yesterday we carried out a 3d laser scan of a pavilion at Henley-on-Thames. the survey is to provide elevation drawings. Not exactly the best day for scanning!



Keeping the scanner dry on a summers day!

0 Comments

Latest projects, laser scanning, topographic surveys and measured building survey

3/6/2012

0 Comments



Laser scanning in central London

Following a successful presentation to the Stroud Building Design Association we have been asked to carry out a laser scan in central London to provide Rights of Light elevation drawings. Projects completed in the last month or so include, a railway and watercourse survey, various topographic surveys and a levelling exercise to add floor heights to existing floor plan drawings. Up coming work includes measured building survey of a local barn, laser scan of a pavilion in Henley on Thames and topographic survey on a technology park.

0 Comments

Grantham Coates Surveys

Land - Engineering - Measured Building Surveyors



Archives

- March 2016
- November 2015
- October 2015
- April 2015
- March 2015
- January 2015
- September 2014
- August 2014
- June 2014
- March 2014
- December 2013
- October 2013
- August 2013
- May 2013
- March 2013
- February 2013
- December 2012
- November 2012
- October 2012
- September 2012
- July 2012
- June 2012
- May 2012
- April 2012
- March 2012
- February 2012
- January 2012
- December 2011
- November 2011
- October 2011
- September 2011
- August 2011

Categories

- All
- Building Surveys
- Laser Scanning
- Measured Building Surveys
- News
- Topographic Survey
- Topographic Surveys

[View my profile on LinkedIn](#)

[RSS Feed](#)